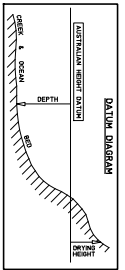
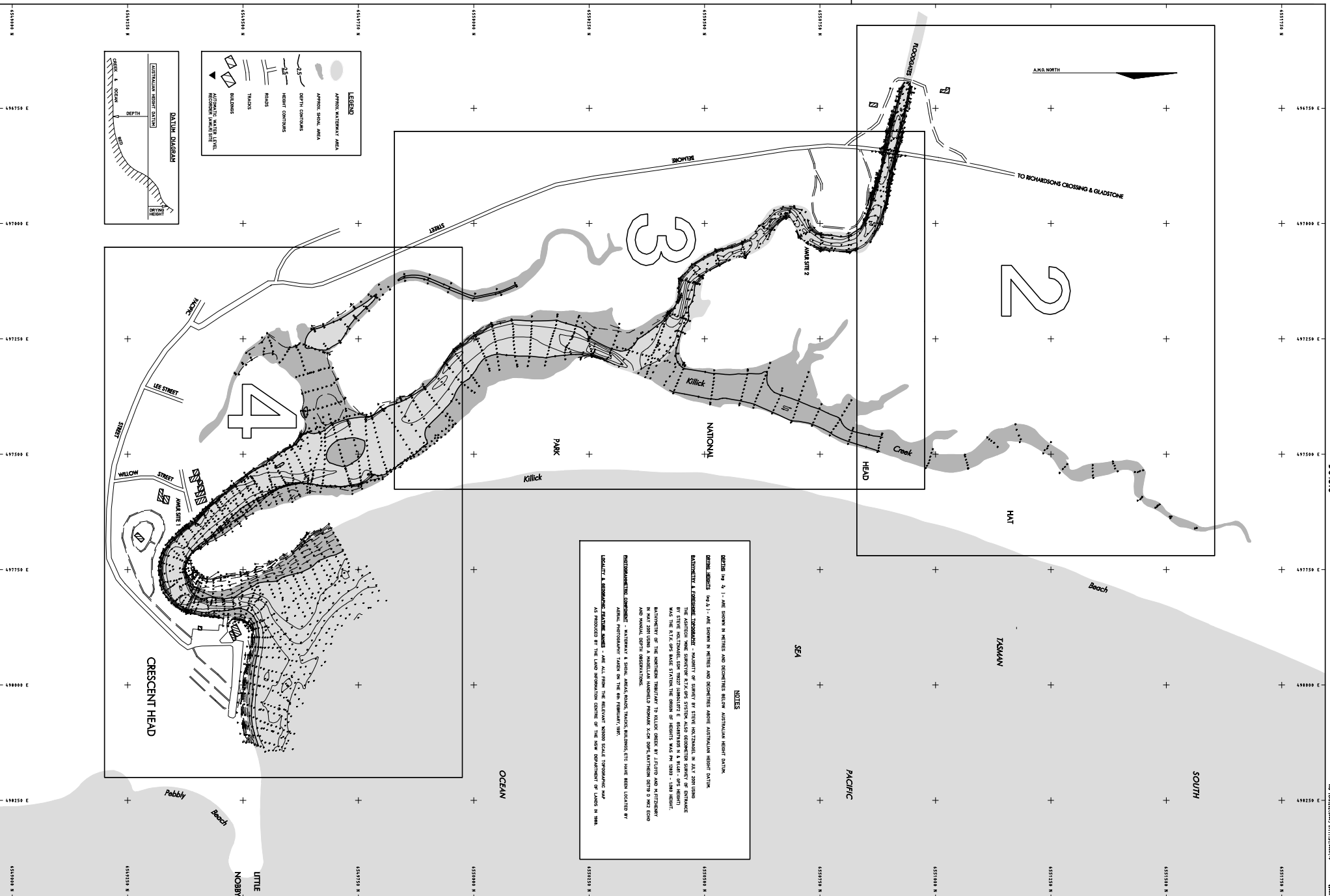

APPENDIX D: KILLICK CREEK HYDROSURVEY (JULY 2001)



LEGEND

- APPROX. SURVEYED AREA
- APPROX. SHOULDER AREA
- DEPTH CONTOURS
- THALWEG
- CHANNEL CONTOURS
- ROADS
- THALWEG
- SHOULDER
- APPROXIMATE WATER LEVEL
- APPROXIMATE LAND USE

NOTES

DEPTH 1m to 2m shown in metres and sometimes below AUSTRALIAN HEIGHT DATUM.

DEPTH INTERVALS (1m to 2m) ARE SHOWN IN METRES AND SOMETIMES ABOVE AUSTRALIAN HEIGHT DATUM.

BATHYMETRY & CHANNEL INFORMATION - BATHYMETRY OF KILLICK CREEK SYSTEM ALSO INDICATED BY SHADING.

THE SHADING WIND INDICATES KILLICK CREEK SYSTEM ALSO INDICATED BY SHADING OF CHANNELS BY STEVE RICHARDS FOR 1992 (BATHYMETRY & CHANNELS IN KILLICK CREEK SYSTEM) WAS THE KILLICK CREEK WALK STUDY. THE SHADING OF CHANNELS WAS IN 1992 - 1993 (KILLICK CREEK).

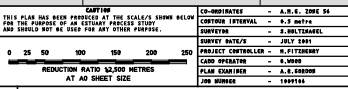
BATHYMETRY OF THE NORTHERN PORTION OF KILLICK CREEK BY J. LLOYD AND M. FITZGERALD IN 1992 USING A HYDROLOGICAL PROFILE KILLICK CREEK SYSTEM (KILLICK CREEK SYSTEM) AND KILLICK CREEK SYSTEM.

PROBATIONARY CHANNELS - BATHYMETRY & CHANNEL INFORMATION TAKEN ON THE 6th FEBRUARY 1992.

APPROXIMATE WATER LEVEL - ALL FROM THE RELEVANT NEAREST SCALE TIDE GAUGE AND AS PROVIDED BY THE LAND INFORMATION CENTRE OF THE NEW ZEALAND DEPARTMENT OF LANDS IN 1994.

PLAN PREPARED BY DEPARTMENT OF PUBLIC WORKS & SERVICES SURVEYING & SPATIAL INFORMATION SERVICES LEVEL 11, MURIEL BUILDING 2-24 RANKIN PLACE, STONEY TELE: 03 9372 1707 FAX: 03 9372 7322	APPROVED DATE	DATE
AK	DETAILS OF AMENDMENTS	

DATUM: AUSTRALIAN HEIGHT DATUM



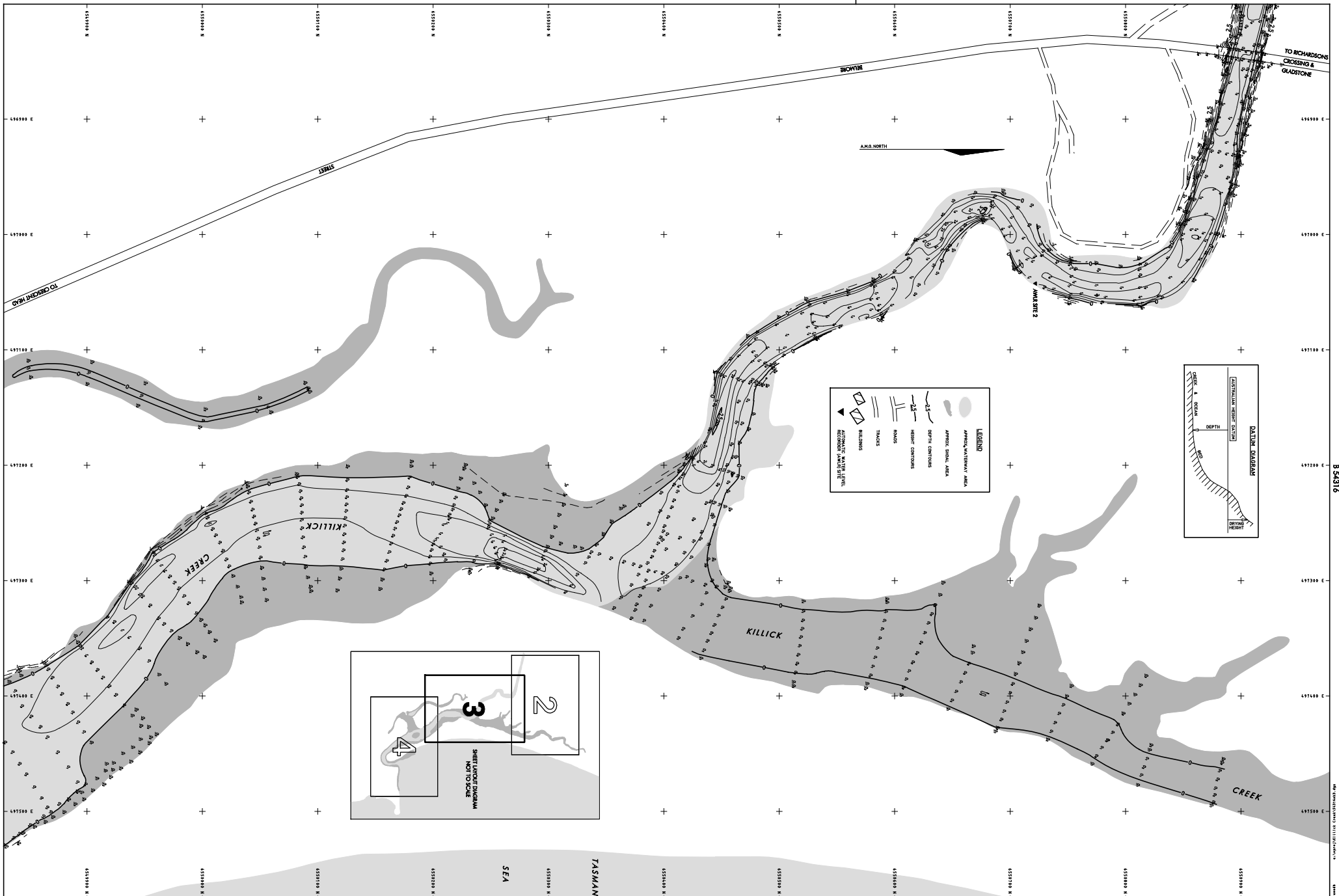
COORDINATES	A.S.D. 2006 24
CUSTOM INTERVAL	1:2.5 METRE
BATHYMETRY	J. SULTZMANN
DEPTH WATER	JULY 2001
PROJECT CONTROLLER	M. FITZGERALD
CAD OPERATOR	K. WOOD
PLAN CHECKER	A.S.D. 2006 24
JOB NUMBER	149414

DEPARTMENT OF LAND AND WATER CONSERVATION ESTUARY MANAGEMENT PROGRAM

KILLICK CREEK HYDROGRAPHIC SURVEY
JULY 2001
INDEX PLAN

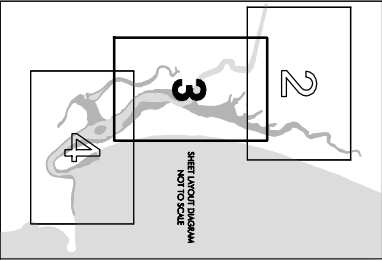
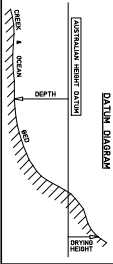
SURVEYOR - S. SULTZMANN 1-14-2002
PROJECT CONTROLLER - M. FITZGERALD 1-14-2002
PLAN EXAMINER - A.S.D. 2006 24

SHEET No. 1
No. of SET 4
PLAN BOOK CAT No. 54316



LEGEND

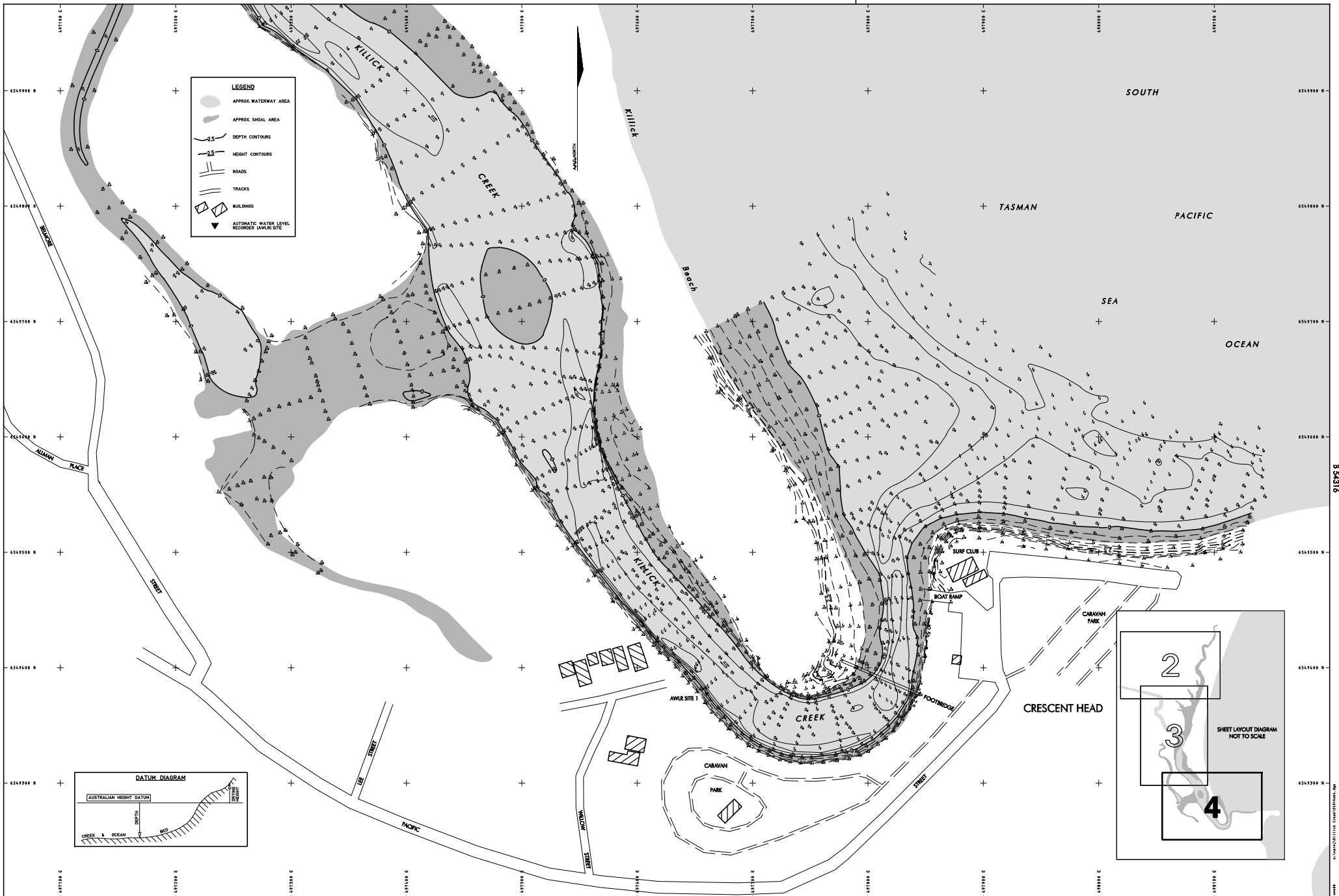
- APPROXIMATE WATER AREA
- APPROX. SOUND, AREA
- DEPTH CONTOURS
- HEIGHT CONTOURS
- MOLES
- TRUCKS
- BUILDINGS
- ALTERNATIVE WATER LEVEL REDUCTION WATERWAY



B 54316

B 54316

PLAN PREPARED BY DEPARTMENT OF PUBLIC WORKS & SERVICES SURVEYING & SPATIAL INFORMATION SERVICES LEVEL 14 MARRELL BUILDING 2-24 BARKSON PLACE STONEY TEL: (08) 9372 1707 FAX: (08) 9372 7922		DATUM: AUSTRALIAN HEIGHT DATUM		CAUTION THIS PLAN HAS BEEN PREPARED AT THE SCALE'S SHOWN BELOW FOR THE PURPOSE OF AN ESTUARY PROFILES STUDY AND SHOULD NOT BE USED FOR ANY OTHER PURPOSE.		CO-ORDINATES - A.S.D. 2006 24 CUSTOM INTERVAL - 0.5 METRE BENCHMARK - J. MOLTENAU SURVEY DATE - JULY 2001 PROJECT CONTROLLER - M. FITZGERALD CAD OPERATOR - K. SPURR PLAN CHECKER - A.S. GIBSON JOB NUMBER - 1449144		DEPARTMENT OF LAND AND WATER CONSERVATION ESTUARINE MANAGEMENT PROGRAM SUPERVISOR - S. MOLTENAU 6-14-2002 PROJECT CONTROLLER - M. FITZGERALD 6-14-2002 PLAN EXAMINER - A.R. GIBSON 6-14-2002		KILICK CREEK HYDROGRAPHIC SURVEY JULY 2001 BATHYMETRY AND FORESHORE TOPOGRAPHY		SHEET # 3 IN SET 4 PLAN BOOK CAT # 54316	
AK	DETAILS OF AMENDMENTS	APPROVED	DATE										



PLAN PREPARED BY
 DEPARTMENT OF PUBLIC WORKS & SERVICES
 SURVEYING & SPATIAL INFORMATION SERVICES
 LEVEL 14 MARRELL BUILDING
 2-24 RANKIN PLACE STONEY
 TEL: (08) 9372 1707 FAX: (08) 9372 7922

DATUM: AUSTRALIAN HEIGHT DATUM

CRITERIA
 THIS PLAN HAS BEEN PRODUCED AT THE SCALE(S) SHOWN BELOW FOR THE PURPOSE OF AN ESTUARY PROFILES STUDY AND SHOULD NOT BE USED FOR ANY OTHER PURPOSE.

COORDINATES - A.S.D. 2006 24
 CONTROL INTERVAL - 0.5 METRE
 SURVEY DATE - JULY 2001
 PROJECT CONTROLLER - M. FITZGERALD
 CAD OPERATOR - M. SPRENG
 PLAN CHECKER - A.S. DEBORAH
 JOB NUMBER - 149144

DEPARTMENT OF
 LAND AND WATER CONSERVATION
 ESTUARINE
 MANAGEMENT PROGRAM

SUPERVISOR - S. MULLER 0-18-1002
 PROJECT CONTROLLER - M. FITZGERALD 0-18-1002
 PLAN EXAMINER - A.S. DEBORAH 0-18-1002

**KILLICK CREEK HYDROGRAPHIC SURVEY
 JULY 2001
 BATHYMETRY AND FORESHORE TOPOGRAPHY**

SHEET # 4
 OF 4
 PLAN BOOK CAT. NO. 54316