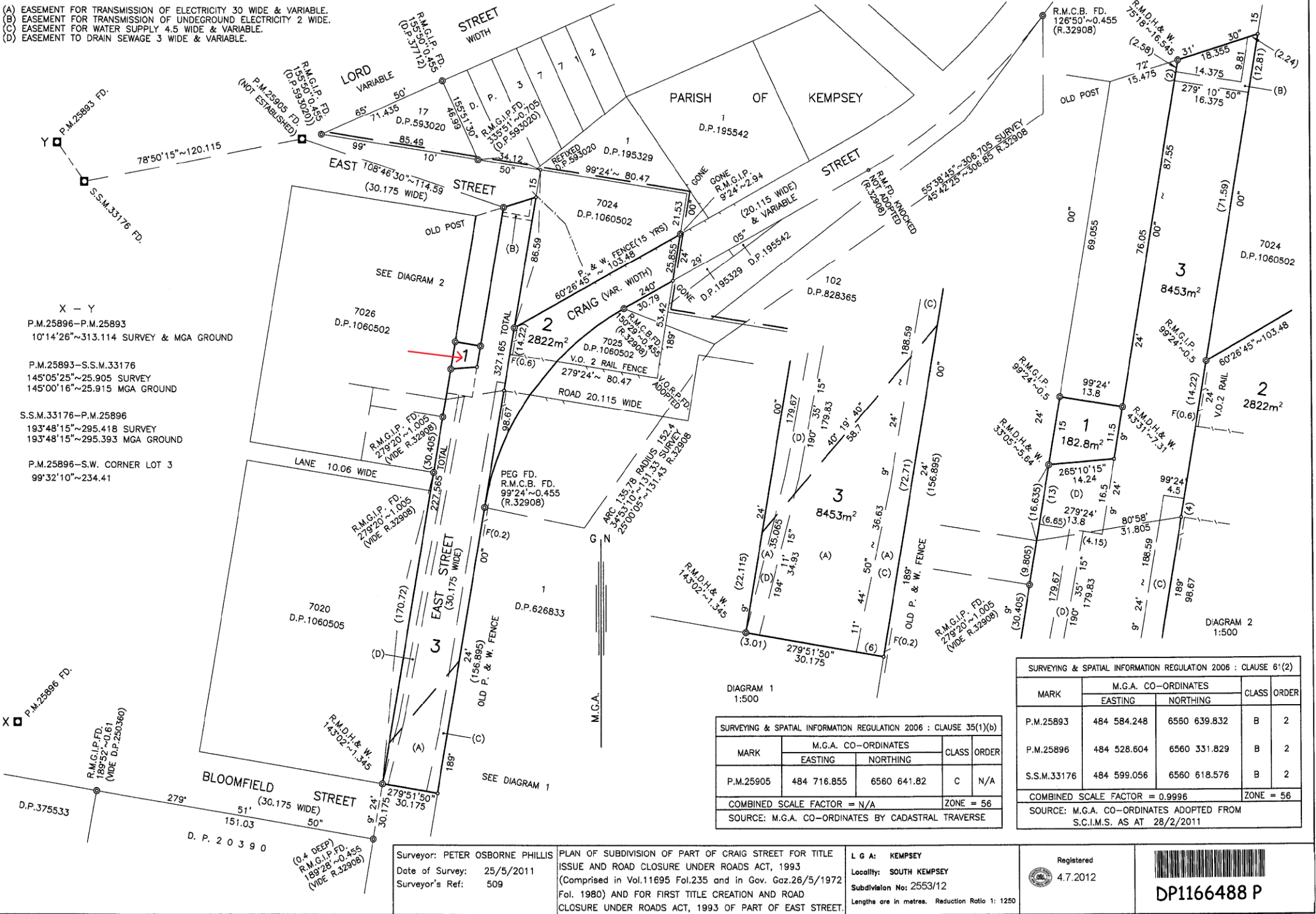


- (A) EASEMENT FOR TRANSMISSION OF ELECTRICITY 30 WIDE & VARIABLE.
- (B) EASEMENT FOR TRANSMISSION OF UNDEGROUND ELECTRICITY 2 WIDE.
- (C) EASEMENT FOR WATER SUPPLY 4.5 WIDE & VARIABLE.
- (D) EASEMENT TO DRAIN SEWAGE 3 WIDE & VARIABLE.



X - Y
 P.M.25896-P.M.25893
 10°14'26"~313.114 SURVEY & MGA GROUND

P.M.25893-S.S.M.33176
 145°05'25"~25.905 SURVEY
 145°00'16"~25.915 MGA GROUND

S.S.M.33176-P.M.25896
 193°48'15"~295.418 SURVEY
 193°48'15"~295.393 MGA GROUND

P.M.25896-S.W. CORNER LOT 3
 99°32'10"~234.41

X □ P.M.25896 FD.
 R.M.G.I.P. FD.
 189°52'~0.61
 (WIDE D.P. 250380)

R.M.G.I.P. FD.
 279°20'~1.005
 (WIDE R.32908)

R.M.D.H. & W. W.
 143°02'~1.345

DIAGRAM 1
 1:500

SURVEYING & SPATIAL INFORMATION REGULATION 2006 : CLAUSE 35(1)(b)				
MARK	M.G.A. CO-ORDINATES		CLASS	ORDER
	EASTING	NORTHING		
P.M.25893	484 584.248	6560 639.832	B	2
P.M.25896	484 528.604	6560 331.829	B	2
S.S.M.33176	484 599.056	6560 618.576	B	2
COMBINED SCALE FACTOR = N/A			ZONE = 56	
SOURCE: M.G.A. CO-ORDINATES BY CADASTRAL TRAVERSE				

SURVEYING & SPATIAL INFORMATION REGULATION 2006 : CLAUSE 61(2)				
MARK	M.G.A. CO-ORDINATES		CLASS	ORDER
	EASTING	NORTHING		
P.M.25893	484 584.248	6560 639.832	B	2
P.M.25896	484 528.604	6560 331.829	B	2
S.S.M.33176	484 599.056	6560 618.576	B	2
COMBINED SCALE FACTOR = 0.9996			ZONE = 56	
SOURCE: M.G.A. CO-ORDINATES ADOPTED FROM S.C.I.M.S. AS AT 28/2/2011				

Surveyor: PETER OSBORNE PHILLIS
 Date of Survey: 25/5/2011
 Surveyor's Ref: 509

PLAN OF SUBDIVISION OF PART OF CRAIG STREET FOR TITLE ISSUE AND ROAD CLOSURE UNDER ROADS ACT, 1993 (Comprised in Vol.11695 Fol.235 and in Gov. Gaz.26/5/1972 Fol. 1980) AND FOR FIRST TITLE CREATION AND ROAD CLOSURE UNDER ROADS ACT, 1993 OF PART OF EAST STREET.

L G A: KEMPSEY
 Locality: SOUTH KEMPSEY
 Subdivision No: 2553/12
 Lengths are in metres. Reduction Ratio 1: 1250

Registered
 4.7.2012

