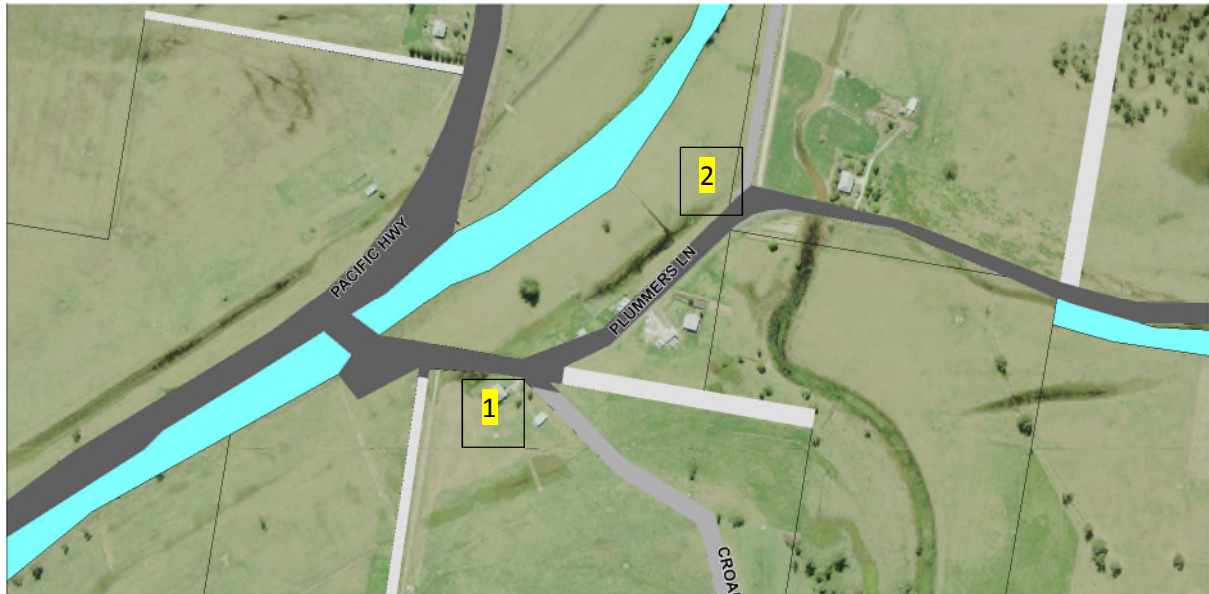


APPENDIX V

CURVES REQUIRED FOR 100KM/HR

100km/hr Proposal Basic Data, Minimum Radius, and speed suited to current radius

Minimum Radius for 100km/hr on flat terrain (e=3%) – 415m



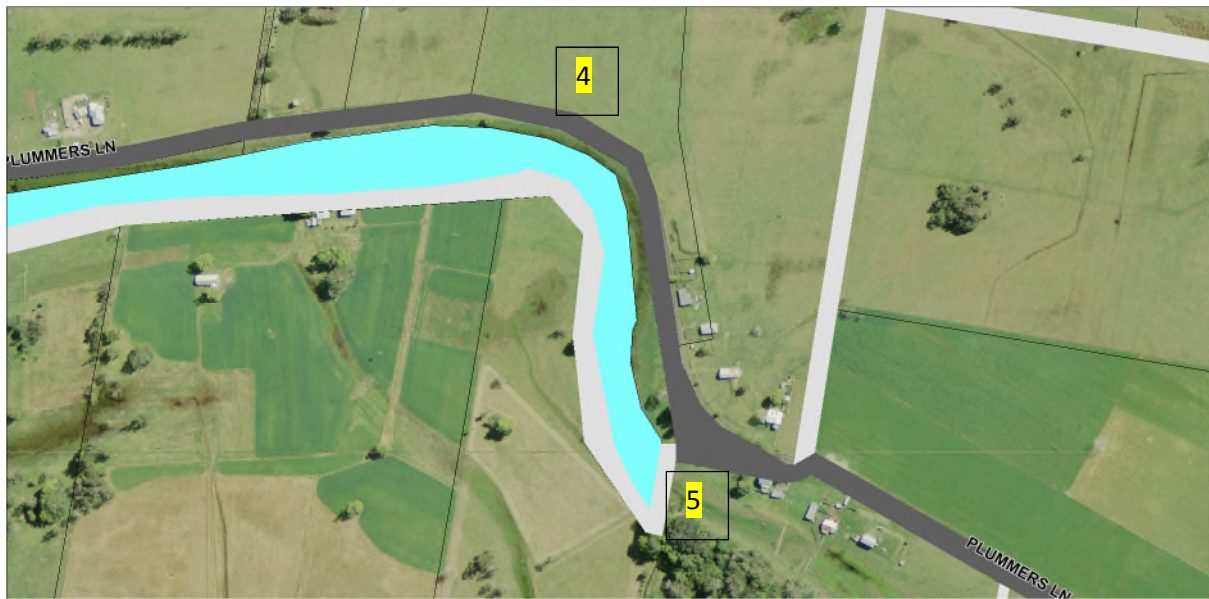
Curve 1 – **Current Radius:** 121m **Change Required:** 294m **Doable:** No due to existing house
Speed Suited: 70km/hr

Curve 2 – **Current Radius:** 93m **Change Required:** 322m **Doable:** No, Change is to large
Speed Suited: 60km/hr



Curve 3 – **Current Radius:** 280m **Change Required:** 135m **Doable:** Yes,
Speed Suited: 90km/hr

APPENDIX V



Curve 4 – **Current Radius:** 209m **Change Required:** 206m
Speed Suited: 80km/hr

Doable: Yes, alongside curve 5

Curve 5 – **Current Radius:** 144m **Change Required:** 271m
Speed Suited: 70km/hr

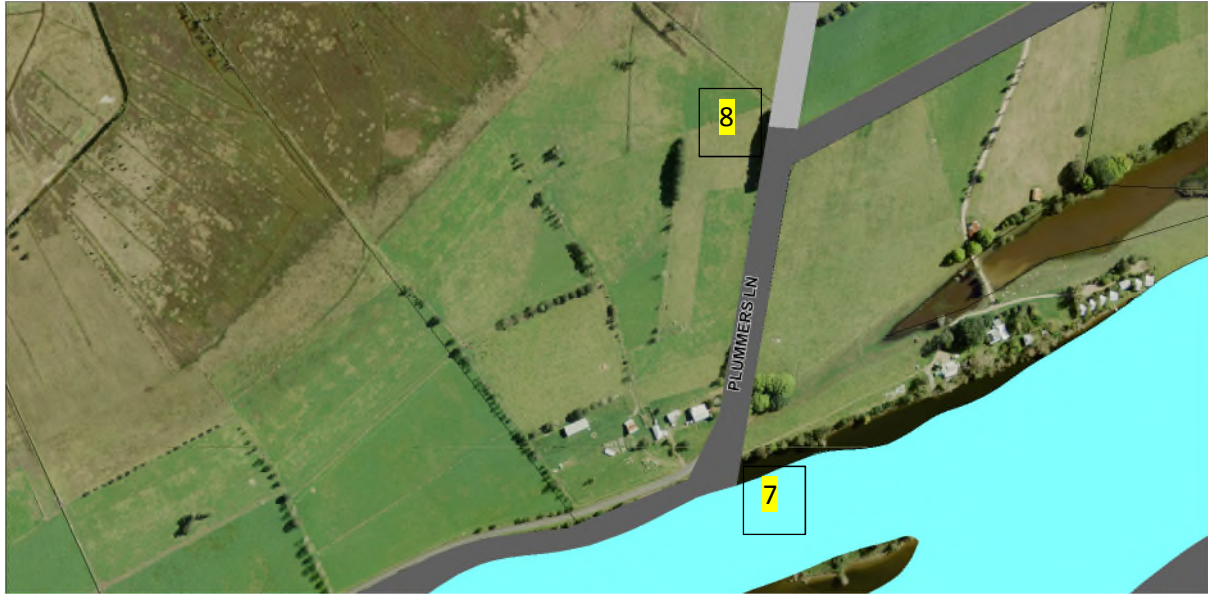
Doable: Yes, alongside curve 5



Curve 6 – **Current Radius:** 199m **Change Required:** 216m
Speed Suited: 80km/hr

Doable: Yes, alongside curves, 4 & 5

APPENDIX V



Curve 7 – **Current Radius:** 191m **Change Required:** 224m
have been changed **Speed Suited:** 80km/hr

Doable: Yes as curves 4, 5 & 6 will

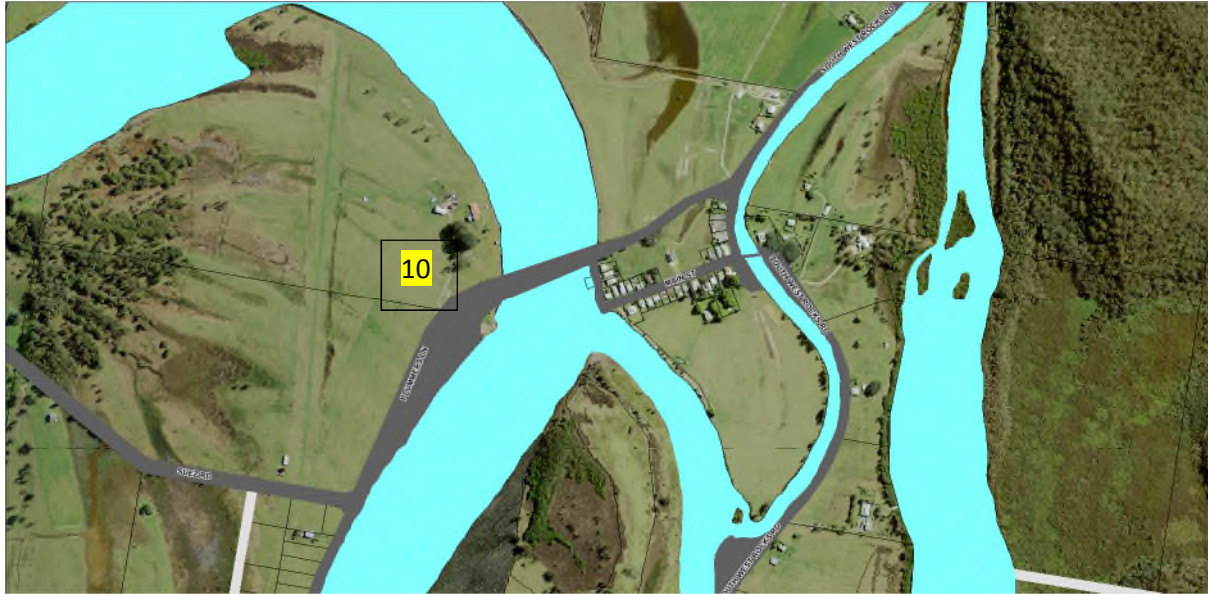
Curve 8 – **Current Radius:** 140m **Change Required:** 275m
have been changed **Speed Suited:** 70km/hr

Doable: Yes as curves 4, 5, 6 & 7 will



Curve 9 – **Current Radius:** 415m **Change Required:** 0m **Doable:** Yes **Speed Suited:** 100km/hr

APPENDIX V



Curve 10 – Current Radius: 321m Change Required: 94m
way Speed Suited: 90km/hr

Doable: No, large waterway in the